

Neo Klima (Elios) Skopelos island

Full Guide Summer 2008

neo klima-elios



© Copyright 2008 - NeoKlima.com

<http://www.neoklima.com>, email: info@neoklima.com

Neo Klima (Elios) is the jewel of Skopelos. Elegant & quiet is situated 19 km from Hora (Skopelos town).

Neo Klima (Elios) is an ideal location to stay since it is in the middle of [Skopelos](#) island on the way from Hora (Skopelos town) to Glossa/Loutraki port.

You will enjoy a beautiful beach that stretches along the coast line; and its sandy part (Hovolo). It hosts a small port - excellent for sailing boats with a breakwater protecting it.

Of course we should not forget to mention, the excellent food at the nearby taverns and restaurants! **NeoKlima.com challenges you to discover its beauties!**

Getting to Neo Klima

Getting to Neo Klima (Elios) is relatively easy, if you do the following:



You have to get to Agios Konstantinos port (~180 kilometers from Athens) or Volos (~360 kilometers from Athens) where ferries, hydrofoils and catamaran gets there with frequent routes to both Skopelos port and Glossa/Loutraki port. Also, you can get a package bus & ferry / hydrofoil / catamaran from various travel offices in Athens.

Check their travel routes at: **Hellenic Seaways:** www.hellenicseaways.gr, **SAOS Ferries:** www.saos.gr, **G.A. Ferries:** www.gaferries.gr, and recently from Kimi (Evoia island) with **Skyros Shipping Company:** www.sne.gr.



Alternatively, you may get to Skiathos island through airplane (www.aia.gr - check routes) and then with ship (see above) to Skopelos or Glossa/Loutraki .

From	To	Distance/Hours
Athens	Ag. Konstantinos	~180 kilometers, ~2 hours
Athens	Volos	~360 kilometers, ~3 ^{1/2} hours
Ag. Konstantinos or Volos	Glossa/Loutraki	(~3 ^{1/2} hours) with ferry (~2 ^{1/2} hours) with hydrofoil
Ag. Konstantinos or Volos	Skopelos	(~4 hours) with ferry (~2 hours) with hydrofoil/catamaran
Athens	Skiathos	by airplane (~ 50 minutes)

Rent A Car & Bike

Skopelos is a large island to explore. Even if you think to use the bus which has frequent routes, some places need definitely a car or bike to explore. Prices are reasonable and there is a great variety of vehicles to choose. Don't forget to ask them to deliver the car at Neo Klima (IElios).

Don't forget to add +30-24240 for area code and +30 for Mobile

Company	Contact Details
MAXI Rent a Car & Bike	Tel: 24380, Mobile: 6944-270144, Email: maxiauto@mail.gr
MOTOR TOURS Car Rentals	Tel: 22986, Fax: 22602, Email: motortours@yahoo.gr
LEMONIS Agency Rent A Car	Tel: 22363, Fax: 23095, Mobile: 6944-582365
Magic Cars	Tel: 23250, 23041, Fax: 23243, Email: skopeloscars@mail.gr
Discovery Rent a Car	Tel: 23033, Fax: 23033, Email: disco1@otenet.gr

Entertainment

Taverns & Restaurants:

As we mentioned earlier - the food is excellent at the nearby taverns and restaurants! Our suggestion list includes the following:

Name	Location
Manolis Tavern	Neo Klima (Elios)
Palataki Restaurant	Neo Klima (Elios)
Xynos Tavern	Neo Klima (Elios)

Excursions - Walks:

Palio Klima - An excellent idea is to visit Palio Klima, 7 km from Neo Klima (Elios) on your way to Glossa/Loutraki port. Tip: *Try to be there around 21:00 (summer local time) and you will enjoy one of the best sunsets.*



Loutraki Port - Visit Loutraki cosy port where you can enjoy your drink or eat at the nearby taverns.



Beaches & Other

Neo Klima (Elios) & Hovolo: Beautiful and quiet with its sandy part (Hovolo).



The following beaches are on your way to Hora (Skopelos town):

- Kastani:** Hidden in pine trees reaching the beach.
- Milia:** Our favorite beach!
- Panormos:** With turquoise waters and near by taverns & restaurants.
- Limnonari:** A hidden bay with sandy beach.
- Agnondas:** With a small port.
- Stafylos:** From the most popular ones.
- Velanio:** Nudist beach!

The following beaches are on your way to Glossa/Loutraki port:

- Armenopetra:** Quiet and relaxing.
- Loutraki:** Excellent!

Hotels, Apartments & Rooms

Neo Klima (Elios) - Hotels, Apartments & Rooms

The village has a great variety of accommodation to choose. NeoKlima.com Team has compiled a suggested list of them to try.

You may choose from the following:

Hotels/Apartments (Apts), Studios/Apartments (Apts), Studios/Rooms.
Let them know that you found the information at NeoKlima.com.

However if you wish to stay at another area such as Hora (Skopelos town) then visit:
 GoSkopelos.com - <http://www.qoskopelos.com>.

For latest changes please visit www.NeoKlima.com or www.GoSkopelos.com

Hotels/Apartments (Apts)

Accommodation	Contact Details (add Area Code +30-24240)	Type/Cat
Hovolo	Tel: 33151-3, Fax: 33150, www.hovoloapartments.gr	Apts / C
Zanetta	Tel: 33140, Fax: 33717, www.zanetahotel.gr	Hotel Apts / C
Delphi Apts	Tel: 33301, Fax: 33171, www.hoteldelphi.com	Hotel Apts / C
Stamatiou Studios	Tel: 33485, 33531, Fax: 33485	Rooms / Apts

Studios/Apartments (Apts)

Accommodation	Contact Details (add Area Code +30-24240, Mobile +30)
Aggelos	Tel: 33889, Mobile: 6997-169071, angel_skop@msn.com
Dia	Tel: 33311, Fax: 33531, Mobile: 6932-099575, panstamoulis@yahoo.gr
Ktima Ravanou	Tel: 33588, Mobile: 6978-656888
Violetta	Tel: 33474, 33043, Fax: 33474, theologoua@yahoo.gr
Accommodation	Contact Details (add Area Code +30-24240, Mobile +30)
Belvedere	Mobile: 6977-241431, 6937-147059, belvedere@mail.gr
Evagelia	Tel: 33831, 33065, Mobile: 6976-181520, evageliaelios@yahoo.gr
Machi	Tel: 33589, Mobile: 6973-079576
Maria	Tel: 33031, 33032, Mobile: 6932-447687
Accommodation	Contact Details (add Area Code +30-24240, Mobile +30)
Sklavos	Tel: 22042, 22081, 33976, Fax: 24515, sklavouritsa@in.gr
Aris Junior	Tel: 33687, Fax: 33687, Mobile: 6976-292899
Eden	Tel: 33984, 33301, 33788, Fax: 33172
Lilian	Tel: 22677, 33307, Fax: 23999, Mobile: 6977-233451
Oasis	Tel: 33674, 33812, Fax: 33674, Mobile: 6977-846025

Studios/Rooms

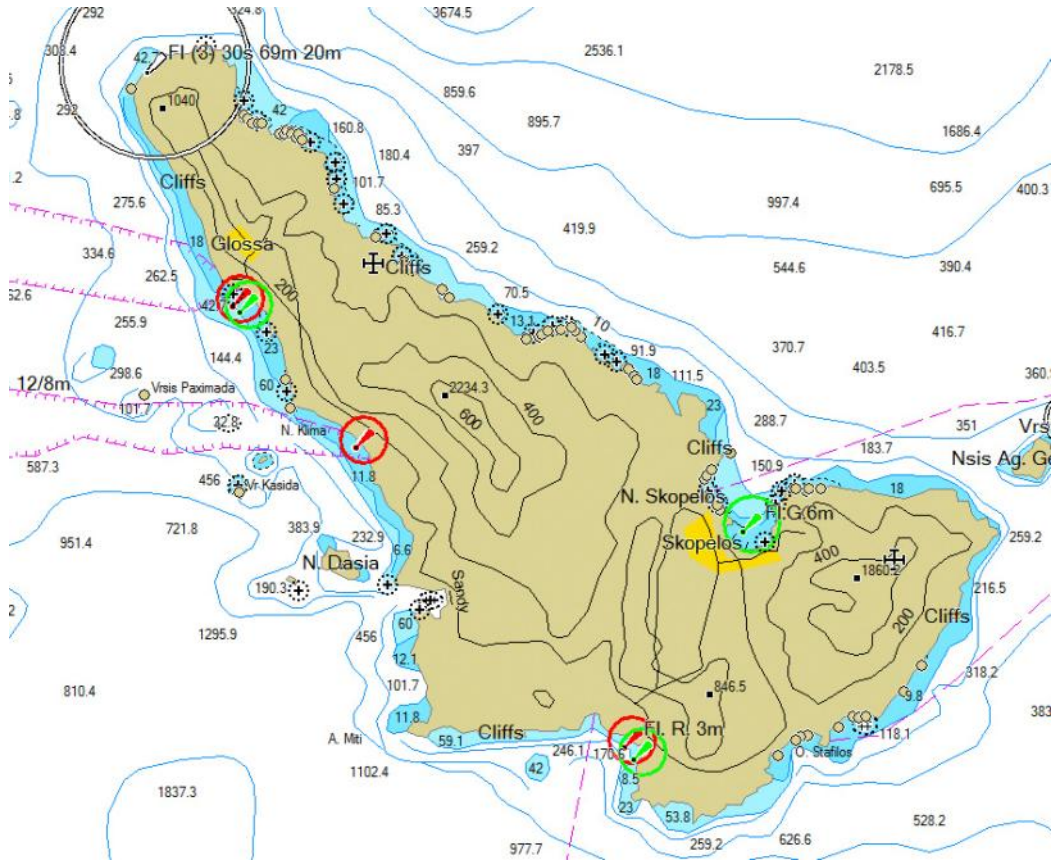
Eleni	Tel: 33442, 33381, Mobile: 6944-864797
Nemesis	Tel: 33932, Fax: 34266
Stamatiou	Tel: 33485, 33531, Fax: 33485

Skopelos Map



(You can use this space for your notes, points of interest, etc)

Skopelos Nautical Map



(You can use this space for your notes, points of interest, etc)

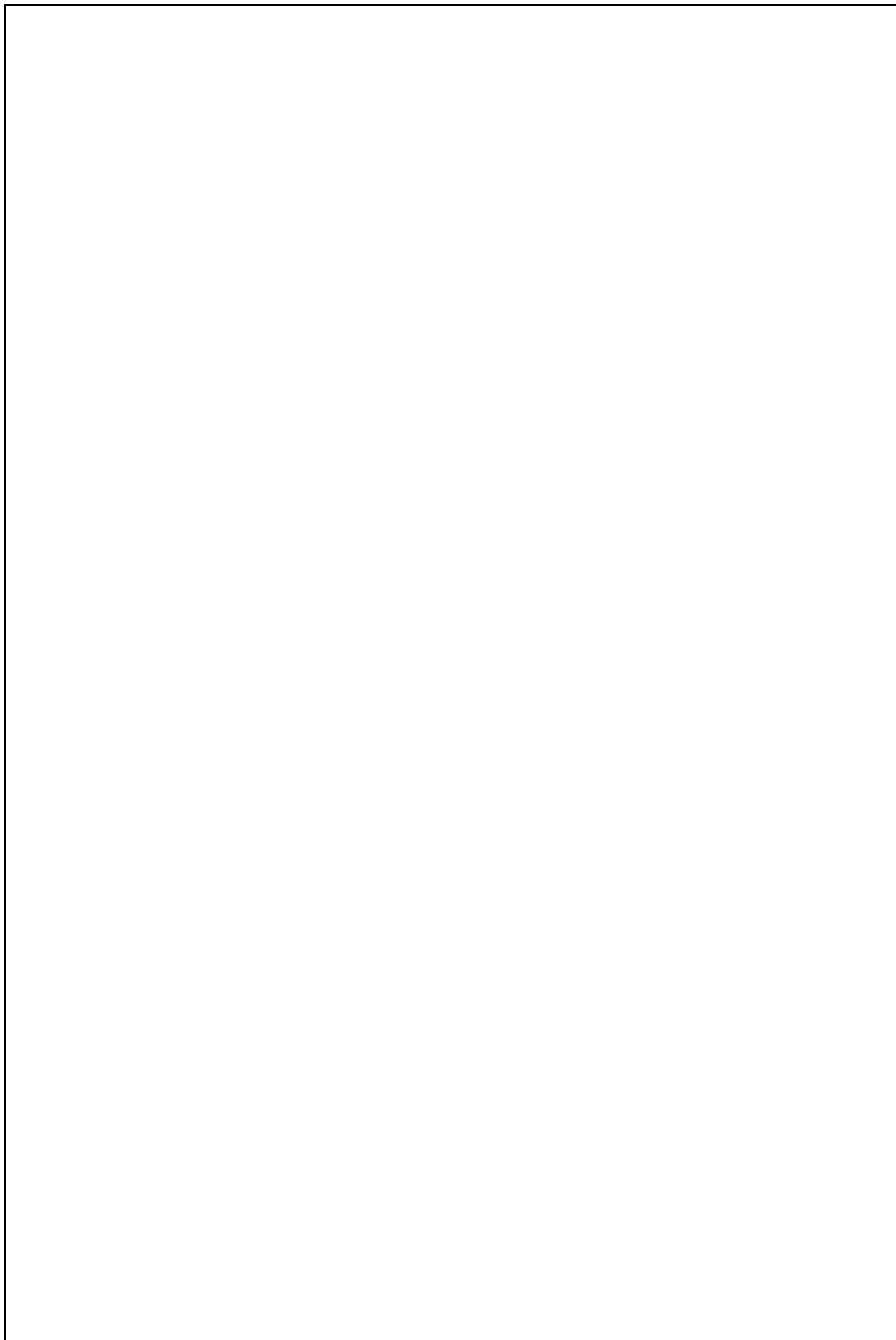
Skopelos Satellite Map



(You can use this space for your notes, points of interest, etc)

Notes

(You can use this space for your notes)

A large, empty rectangular box with a thin black border, intended for the user to write their notes. It occupies the majority of the page's vertical space.

